

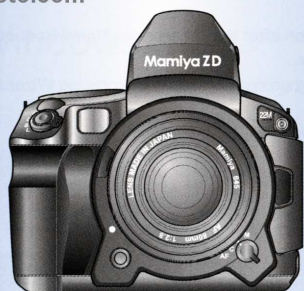
Mamiya

Mamiya ZD

Mamiya Digital Camera & Development Software

Setup Guide

www.ianbfoto.com



- This setup guide illustrates how to use this product with the most basic settings.
- The reverse side illustrates how to develop the photographed images by uploading the images onto the computer using the attached photo developing software.
- Refer to the User's Manual for details.

1 What's in the box?

Take the camera and accessories out of the box and check that all items are included.



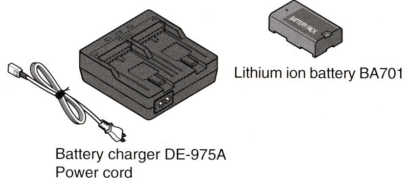
The memory card (SD memory card or compact flash card) that allows the storage of photographed images is sold separately.



Mamiya ZD Camera

- Eye cup AE301
- Correcting lens standard DE301
- Finder screen type A SA301
- IR Cut filter YB301
- Body front cap KV401

- Neck strap CN301
- IEEE1394 cable BL301
- Questionnaire form/ Questionnaire return envelope
- Warrantee/Mamiya Camera Club Post Card



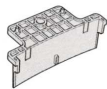
Battery charger DE-975A
Power cord



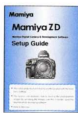
Mamiya Digital PhotoStudioBS301
(RAW Data development software)



IR Cut filter case



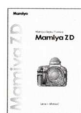
Filter replacement guide



Mamiya ZD
Setup Guide (this document)

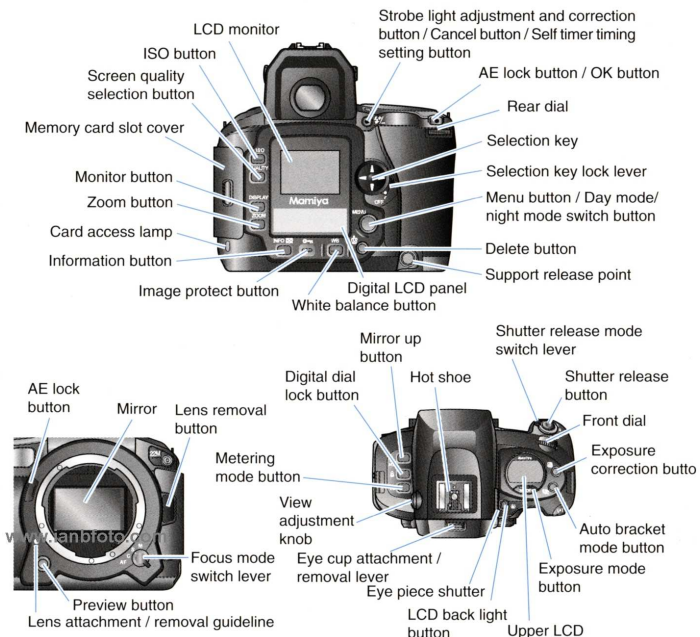


Mamiya Digital PhotoStudio
User's Manual



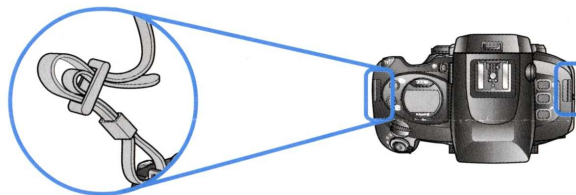
Mamiya ZD
User's Manual

2 Names of parts



3 Before you begin

1. Attach the provided strap on the hook (2 places) of the camera according to the diagram.

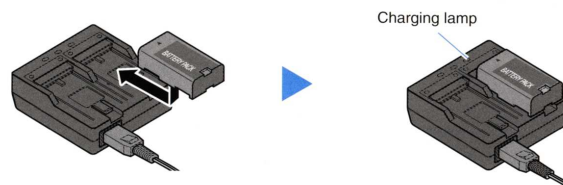


2. Charge the provided battery.

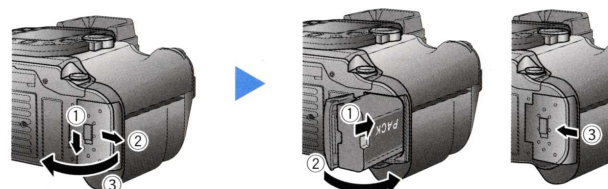
Connect the power cord into the battery charger and then the power plug to the outlet. The Power lamp will light.



When the battery is set in the battery charger as shown in the diagram, the charging lamp will flash and the battery charging will start automatically.



When the charging lamp stops flashing and stays lit, charging is complete. The first charging session after purchase will be complete in approximately 2 hours.



4 Preparing the camera

1. Set the date and time of the camera.

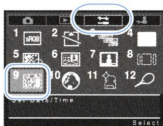
Place the shutter release mode switch lever to S (Single-Frame Mode) and move the selection key lock lever to the ON position. Display the menu by pressing the menu button and select [] (Set up menu) using the [] of the selection key and press [] on the selection key.



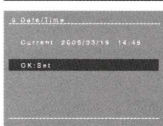
Selection key lock lever



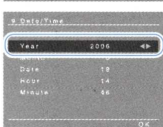
OK button



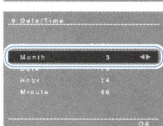
1 Using the [] of the selection key, select the [9] "Set Date/Time" and press the OK button.



2 The current time and date will be displayed. Press the OK button to complete.



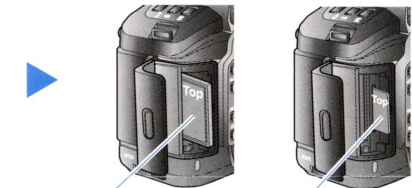
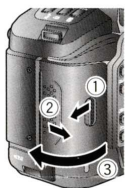
3 Set the year using the [] of the selection key.



4 Once the year is set, use the [] of the selection key in order to set the month. Set the day/hour/minute accordingly. Press the OK button to confirm the settings.

2. Insert the separately sold memory card.

Open the memory card slot cover of the camera and firmly insert the memory card as shown in the diagram. Close the memory card slot cover.



Compact flash card (CF card/MD: Micro drive) slot. SD memory card slot



The SD memory card and the compact flash card (CF card/MD: Micro drive) can be used as memory cards. Use a memory card with a capacity of 256 MB or over.

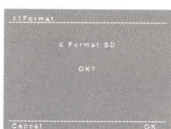
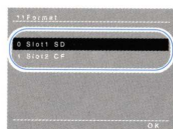
3. Format the inserted memory card.

Display the menu by pressing the menu button and select [] (Set up menu) using the [] of the selection key and press [] on the selection key.

1 Using the [] of the selection key, select the [11] "Format" (card formatting) and press the OK button.

2 Using the [] of the selection key, select the slot with the memory card inserted (SD card or CF card) and press the OK button.

3 A message confirming formatting will be displayed. Press the OK button. Press the cancel button in order to cancel formatting. Pressing the cancel button will direct the screen to step 2.



All images within the memory card will be deleted when formatted.

4. Remove the camera front cap and lens front/rear caps.

The body front cap of the camera is removed by turning the body front cap in the direction of the arrow while pressing the lens removal button.



Lens removal button

5. Attach the lens.

Match the lens attachment index and camera lens attachment/removal index and turn until a clicking noise is heard.



Lens attachment / removal guideline

5 Taking a photograph

1. Place the shutter release mode switch lever to S (Single-Frame Mode) and move the focus mode switch "S" (single focus) position.



Shutter release mode switch lever

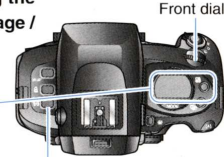


Focus mode switch lever

2. Turn the front dial (or rear dial) while pressing the light adjustment mode button and set to "Average / partial area automatic switching metering".



Upper LCD

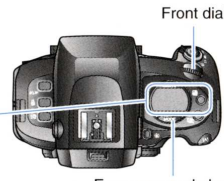


Metering mode button

3. Turn the front dial while pressing the exposure mode button and set to "P (program mode)".

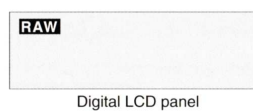


Upper LCD



Exposure mode button

4. Turn the rear dial while pressing the image quality selection button and set the stored image quality to "RAW".



Digital LCD panel



Screen quality selection button

Rear dial

5. Turn the rear dial (or front dial) while pressing the ISO button and set ISO reception to "100".



Digital LCD panel



ISO button

Rear dial

6. Turn the front dial while pressing the white balance button and set to "AWB" (auto white balance).



Digital LCD panel



White balance button

Front dial

7. Hold the camera so that the subject is within the focus frame and press the shutter release button halfway. Once the focus match mark is lit, fully press the shutter release button and take the photograph.

6 Displaying and deleting images

(Displayed on the LC monitor)

Displaying images

1. Push the monitor button after taking the photograph.

The most recently photographed image will be displayed on the LC monitor. Pressing the shutter release button will automatically return the camera setting to photography mode.



Monitor button

Delete button

Deleting images

1. Push the monitor button.

The most recently photographed image will be displayed on the LC monitor.

2. Display the image to be deleted using the [] of the selection key.

3. Push the delete button.

4. Using the [] of the selection key, select "1 frame" or "All images" and press the OK button. A message confirming image deletion will be displayed. Select OK to perform deletion.



Deleted images cannot be displayed again.

- The reverse side illustrates how to develop the photographed images by uploading the images onto the computer using the attached "Mamiya Digital PhotoStudio" photo developing software.
- Please read the following.

Reverse side



Software section

- This setup guide illustrates how to use this product with the most basic settings.
- This explanation will illustrate how to upload onto the computer and develop the photographed images.
- Refer to the "Mamiya Digital PhotoStudio User's Manual" for details.

1 Installing the software



If there are any software applications running in the background (including virus check software), please shut them down.

Using Windows

Operating environment of the computer having this program installed.

The following operating environment is recommended for the computer having this software installed.

OS	Windows 2000/Windows XP
CPU	Pentium 4 or higher, 2.4 GHz or faster
Memory	1 GB or more
Display	1024 x 768 pixels or more, capable of 24-bit full color
Hard Disk	256 MB or more available disk space

1. Start the computer and insert the included CD-ROM into the CD-ROM drive of the computer. Double click the [MAMIYA_DP] icon and then open [SETUP.EXE]. A screen for selecting the language type of the installed software will be displayed.



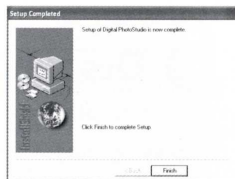
2. Select [English] and click on the [OK] button in order to start the installation. Continue the install process according to the messages being displayed on the screen.



Select [AGREE] when the screen confirming on Terms of Use [LICENSE AGREEMENT] is displayed. Continue the install process.



3. Press the [Finish] button when the [Setup Completed] screen is displayed. The installed software will be ready for use once the computer is restarted.



2 Displaying images



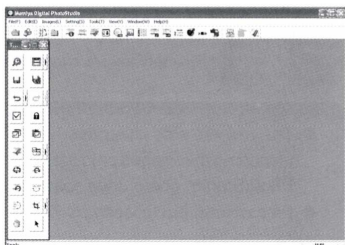
The Windows XP screen will be referred to for this explanation.

1. Start the computer. Using the card reader, upload the images stored on the memory card onto the computer.
2. Double click the [Mamiya Digital Photostudio] icon on the desktop and open the software program. (Double click the [Mamiya Digital PhotoStudio] icon placed in the designated folder during installation when using the Macintosh operating system.)

[Mamiya Digital PhotoStudio] (the start-up screen) window appears. (Only the toolbar will be displayed on the Macintosh operating system.)



Double click



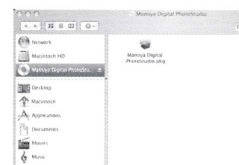
Using Macintosh

Operating environment of the computer having this program installed.

The following operating environment is recommended for the computer having this software installed.

OS	Mac OS X v10.2 and after
CPU	Power PC G4 350 MHz or faster
Memory	1 GB or more
Display	Displaying over 16,700,000 colors / 1024x768 and above
Hard Disk	256 MB or more available disk space

1. Start the computer and insert the included CD-ROM into the CD-ROM drive of the computer.
2. Double click the [Mamiya Digital PhotoStudio] icon.



3. The [Install Mamiya Digital PhotoStudio] screen will be displayed. Click the [Continue] button. Continue the install process according to the messages being displayed on the screen.



Select [Agree] when the screen confirming Terms of Use is displayed. Continue the install process.

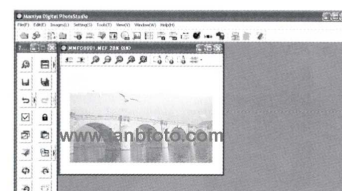
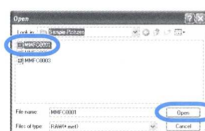
4. Press the [Close] button when the "The software was successfully installed" screen is displayed. The installed software will be ready for use once the computer is restarted.



3. From the [File] menu, select [Open]. The [Open] window appears.



4. Open the folder where the RAW data photograph is stored and select the image file (RAW data: extension MEF). Click the [Open] button. The image will be displayed.



3 Adjusting and developing the image

The development process using the "Processing Wizard (Processing Preview Assistant for the Macintosh version)" will be explained below. Refer to the Mamiya Digital PhotoStudio User's Manual for details.

1. From the [Tool] menu, select [Processing Wizard (Developing Parameter Setting Assistant on the Macintosh version)].



The [White Balance] screen of the [Processing Wizard] screen.

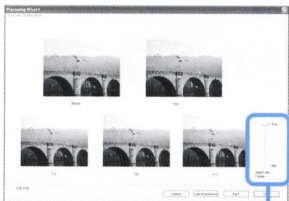


[Shot Setting], [WB mode], [Color Temperature], [Mired], and [File] can be set accordingly on the [White Balance] screen.

2. Click [Next] after setting the [White Balance] settings and set the [Exposure Compensation].



The upper level will display the pre-adjustment and post-adjustment images in the [Processing Wizard].
The lower level will display the image variation according to the adjusted rates.
The adjustment rate can be set by selecting on the desired image in the lower level. Clicking on the left and right images on the lower level will display the image in the center, and will be referred to as a post-adjusted image.

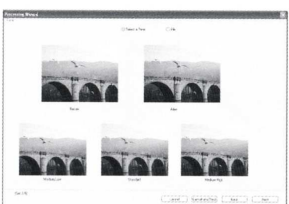


Adjustable Range slider



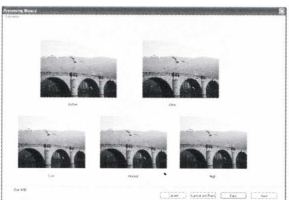
Exposure correction can be set using the adjustment width setting using the adjustment width slider on the [Exposure Compensation] screen. Clicking on the right hand image will adjust in the + direction and clicking on the left hand image will adjust in the - direction.

3. Click [Next] after setting the [Exposure Compensation] settings and set the [Tone].



On the [Tone] screen, clicking on the right hand image will adjust in the [Medium High] direction and clicking on the left hand image will adjust in the [Medium Low] direction. Placing a check mark on [File] will use a previously saved adjustment file for adjustment.

4. Click [Next] after setting the [Tone] settings and set the [Saturation].



On the [Saturation] screen, clicking on the right hand image will adjust in the [High] direction and clicking on the left hand image will adjust in the [Low] direction.

5. Click [Next] after setting the [Color] settings and set the [Color Balance].



Adjustable Range slider



Each of the Red, Green, and Blue Color balances can be using the adjustment width set on the adjustment width slider on the [Color Balance] screen. Clicking on the right hand image will adjust in the + direction and clicking on the left hand image will adjust in the - direction.

6. Click [Next] after setting the [Color Balance] settings and set the [Sharpness/Noise Reduction/Lens Correction].

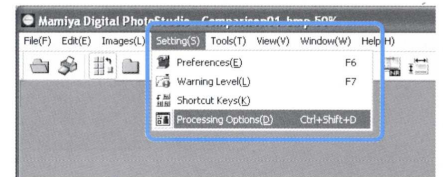


Strength of sharpness can be adjusted with the slider of [Sharpness] appearing on the [Sharpness/Noise Reduction/Lens Correction] screen.
Strength or width of eliminating noise can be adjusted with the slider of [Noise Reduction]. In the [Lens Correction] screen, you can select [Vignetting Reduction] and [Distortion Correction].
If you put a checkmark next to [File] for each parameter, various corrections can be made by using the set adjustment files.

7. Press the [Save] button after the [Sharpness/Noise Reduction/Lens Correction] settings are complete.

This will end the setting process using the [Processing Wizard].

8. Select [Processing Options] from the [Settings] menu.



The [Processing Options] window appears.

9. Set [Output format], [Color Space], and [Save Destination] on the [Processing Options] window.



- By using [Output format], you can select the file format to be output from the three types of [Exif-JPEG], [Exif-TIFF(8bit)], or [TIFF(16bit)].
- By using [Color Space], you can select the applicable color space from the two types of [sRGB] or [AdobeRGB].
- By using [Save Destination], you can set the save location of developed pictures.

Software Functions

This software has the following five functions. Refer to the User's Manual for details.

(1) Browsing

This is a function that allows the user to display raw images taken and developed image data on a computer. Thumbnail display and Preview display are possible.

Thumbnail

This is a function that allows the users to list taken images and developed image data at a reduced size.

Preview

This is a function that displays a preview of the output image of taken images and developed image data.

Displaying Image Information

This is a function that allows the user to view the file name, file size, and various other settings of the image taken.

(2) Retouching (editing) function

Overall adjustments and individual adjustments can be carried out through the Wizard Format (consists of answering the questions posed by the system allowing easy overall adjustment).

(3) Developing

This is a function that allows the user to modify image white balance, color balance and exposure correction to develop the image.

(4) Output

This is a function that allows the user to output developed images from a printer or image setter.

(5) Capture Function

This is a function that allows the user to take images by controlling the aperture and shutter speed of a camera from a computer when the camera is connected to a computer which has the software installed.